

ELEGANT PLUS

PWM SERIES PCU

CORE FEATURES



**INTELLIGENT
MODES**



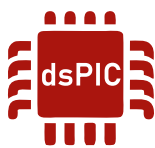
**PURE
SINE WAVE**



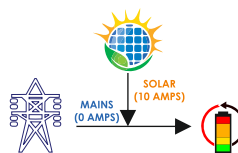
**TRUE CV CC
PWM**



LCD DISPLAY



**ADVANCED
DSP TECHNOLOGY**



**AI CHARGE
SHARING**

- Big Display for Data
- Maximized Solar Usage through Intelligent modes.
- Incorporated with Microchip and ST DSP Engines
- Safety and Protections

- 5 Stage Battery Charging
- Multiple Battery Selection
- Sleek & Aesthetic design
- Works as standalone Solar Inverter in case of No-Grid

Elegant Plus- PWM Solar PCU Technical Specifications										
Parameters			Rating					Adjustable Range		
Model			EP-PCUOGP-1112/S11	EP-PCUOGP-1512/S11	EP-PCUOGP-2224/S11	EP-PCUOGP-2724/S11	EP-PCUOGP-3524/S11			
Capacity			800VA	1150VA	1715VA	2150VA	2850VA			
Operating DC Voltage			12V		24V					
Typical Efficiency			≥80%		≥82%					
Switching Element			MOSFET							
Charger Topology			Boost MOSFET							
Parameters (Grid)										
Nominal Grid Voltage			230V							
Nominal Frequency			50Hz							
Frequency Range			45-55Hz							
Output PF.			0.7							
Battery Charging Method (5 Stage)			Soft Start/Bulk/Absorption/Float/Equalize							
Grid-Battery Charging	TUB (Default)	Boost	14.4V ± 0.2V (Each Battery)					13.8V - 15V		
Grid-Battery Charging	SMF	Float	13.8V ± 0.2V (Each Battery)					13V - 14.2V		
Grid-Battery Charging	SMF	Boost	14.2V ± 0.2V (Each Battery)					13.5V - 14.2V		
Grid-Battery Charging	SMF	Float	13.8V ± 0.2V (Each Battery)					13.5V - 14.2V		
Grid-Battery Charging	Enable	Default	15A ± 1A					5A - 18A		
Grid-Battery Charging	Enable	Maximum	18A ± 1A							
Current	Disable	Normal/Boost	Charging Current 0.0A							
Grid Reconnect @Battery Voltage			11.7V ± 0.2V (Each Battery)					11V - 12.5V		
Grid Low Cut Voltage	UPS Mode Enable	170V ± 10V								
Grid Low Cut Voltage	UPS Mode Enable	100V ± 10V								
Grid Low Cut Voltage	UPS Mode Enable	180V ± 10V								
Grid Low Cut Voltage	UPS Mode Enable	110V ± 10V								
Grid Low Cut Voltage	UPS Mode Enable	265V ± 10V								
Grid High Cut Voltage	UPS Mode Enable	290V ± 10V								
Grid High Cut Voltage	UPS Mode Enable	255V ± 10V								
Grid High Cut Voltage	UPS Mode Enable	280V ± 10V								
Changeover (Batt. to Mains)	UPS Mode Enable/Disable	<6ms								
Changeover (Mains to Batt.)	UPS Mode Enable/Disable	<25ms								
DG Mode	Enable/Disable	Disable								
Parameters (Battery Mode)										
Output Phase			Single Phase							
Output Waveform			Sinewave							
Nominal Output Voltage			220V ± 5%							
Max. Output Current			2A	2.7A	4.20A	5.1A	7A			
Nominal Frequency			50Hz ± 1							
Battery Low Buzzer			10.8V ± 0.02V (Each Battery)					10.5V - 11.1V		
Battery Low Cut			10.5V ± 0.02V (Each Battery)					10V - 11.5V		
Battery High Cut			16.5V ± 0.02V (Each Battery)					16.5V - 17.5V		
Voltage THD			<3% (Linear Load)							
Overload Capacity			UPS Mode Disable	>110% 3-Times Auto Reset with 30sec. Delay and 4th Time Shut Down.						
			UPS Mode Enable	>110% 1st Time Shut Down after 30sec. Delay						
			>150% Output Goes Down, Shut Down with 10 sec. delay							
Protection			Overload, Battery Low, Battery High, Over Temperature, Short Circuit, PV Reverse, PV High, Mains Fuse Trip, Grid Overload, Wiring Fault							
Switches and LED Indication			S.No.	Switch	Function(s)	Switch LED Status				
			1	POWER	ON/OFF UPS Output	SYSTEM ON - LED ON , SYSTEM OFF - LED OFF				
			2	Inverter/UPS	When it is Short Pressed it Enable UPS/Inverter Mode Selection. When it is long Pressed Enables the UPS Parameter Setting.	UPS Mode ON - LED ON , UPS Mode OFF - LED OFF				
			3	SMF/TUB	When it is Pressed it Enables TUBULAR/SMF Battery Selection	TUBULAR Battery - LED ON , SMF Battery - LED OFF				
			4	Hybrid/PCU	When it is short pressed it enables Hybrid/PCU Mode Selection	PCU Mode - LED ON, Hybrid Mode - LED OFF				
			5	Only LED	Solar Status Green/Red	Green LED ON - Full Solar used , Green LED Blinking - Partial Solar used , Green LED OFF - No Solar used , Red LED ON - PV Reverse Protection, Red LED OFF - No Protection Selected				
Display			Battery Voltage, Solar Charging Current, Grid Charging Current, Solar Load Current, Grid Voltage, Grid Frequency, Output Voltage, Output Frequency, Load in % on Battery, Load in % on Solar, Charging Mode, Protection, Charging Mode, Solar Kwh(Saving), Solar Availability Status, Solar Working Mode (Hybrid/PCU Lite/PCU Ultra), UPS ON/OFF							
Parameters (Solar)										
Switching Element			MOSFET							
Operating Mode HYBRID/PCU LITE/PCU ULTRA			Hybrid							
Type of charger			PWM							
SPV Charging Voltage	TUB	Boost	15V ± 0.02V (Each Battery)							
SPV Charging Voltage	TUB	Float	14.2V ± 0.02V (Each Battery)							
SPV Charging Voltage	SMF	Boost	14.3V ± 0.02V (Each Battery)							
SPV Charging Voltage	SMF	Float	13.9V ± 0.02V (Each Battery)							
Efficiency			≥97%					13.5V - 14V		
Solar Current Min.			>1A (Below 1A, System will act like Solar Absent)							
Solar Current Max.			30A	50A						
Input Voltage Range (Min - Max) Voc			17V - 25V		31V - 45V					
Maximum PV Power Recommended			550W	1000W	1800w		2000w			
Parameters (Environment)										
Operating Temperature			0 - 50°C							
Cooling			Fan							
Max. Relative Humidity@25°C (Non-condensing)			95%							
Noise @1metre			50dB							
Standard Compliance			IP20							
Weight (Kg) Gross			9.4kg	10.0kg	12.0kg	16.0kg	18.0kg			
Dimension LxWxH (mm)			390X335X225			395X385X270				
Note - Elegant plus 3524 model support to 14HP branded submergeible pumps										

Note:- Elegant plus 3524 model support to 1HP branded submersible pumps.

*Due to continuous improvement technical specifications & product image can change without prior notice.



Servotech Renewable Power System Limited

(Formerly known as Servotech Power Systems Limited)

Registered Office : 806, 8th Floor,
Crown Heights, Hotel Crowne Plaza,
Rohini, New Delhi - 110085

Ph: 011-41183116, +91 9818680033

 **+91 9311313734**

Email: servotech@servotechindia.com

Unit-1 Kundli Plant: 76A, Sector-57,
Revenue Estate, Kundli, Sonipat,
Haryana - 131028

Unit-2 Safiabab Plant: Killa No. 14/6/1/2
(0-3), 6/2/3 (5-13) Safiabab, Pana Paposhian,
Rai, Sonipat 131029 Haryana

www.servotech.in

